

## Cheat Sheet for MnBorlog

### Transfer Data from Data Collector:

1. Make sure PRO-XR is ready to transfer
2. Pathfinder Office –
  - Utilities Menu -> Data Transfer

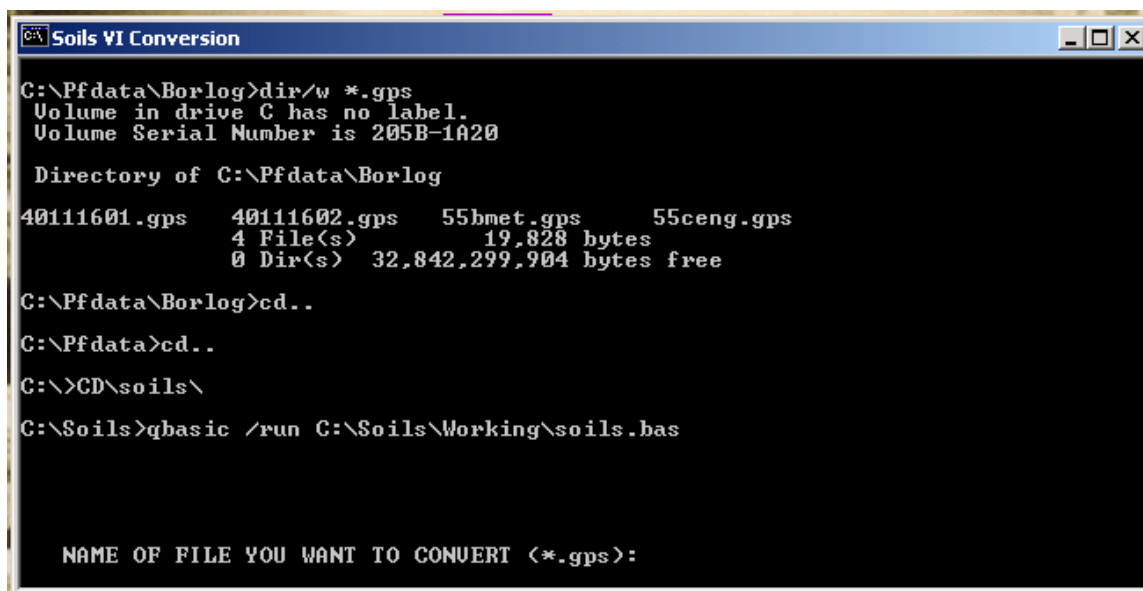
### Open Project in Pathfinder Office:

1. Once data has been transferred, you need to view it in Pathfinder Office.
  - Data can be edited if you need to.
2. If everything looks good then export.

### Export Project:

1. Utilities Menu -> Export..
2. Choose the coordinates you wish to export in.
3. Hit OK

### Run Data Conversion Program (\*.gps file):



```

C:\Pfdata\Borlog>dir/w *.gps
Volume in drive C has no label.
Volume Serial Number is 205B-1A20

Directory of C:\Pfdata\Borlog

40111601.gps    40111602.gps    55bmet.gps      55ceng.gps
               4 File(s)              19,828 bytes
               0 Dir(s)    32,842,299,904 bytes free

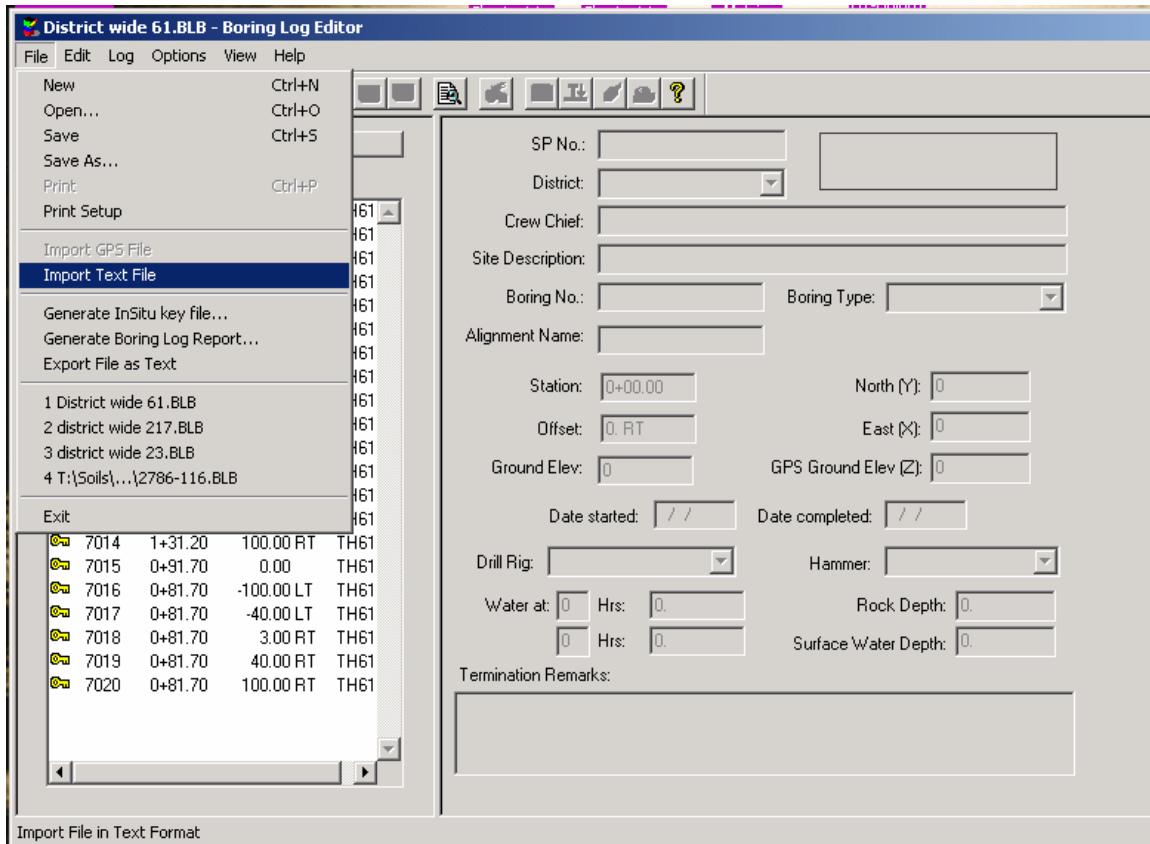
C:\Pfdata\Borlog>cd..
C:\Pfdata>cd..
C:\>CD\soils\
C:\Soils>qbasic /run C:\Soils\Working\soils.bas

NAME OF FILE YOU WANT TO CONVERT (*.gps):
  
```

1. Double click on icon called “New Soils Conversion”
2. Files available to export will be printed on your screen
3. Type in the file you want to convert – “The Exact Name”
4. Hit Enter

**Open MnBorlog:**

1. Double Click on Icon
2. Import File into MnBorlog (\*.itg file)
  - File Menu -> Import Text File
  - Highlight the file you want to convert
  - Click on “OPEN”
  - Then it will ask Metric or English



3. Save File as anything you want to call it
  - File Menu -> Save as
  - Name file
  - Click on “SAVE”
4. Generate a Soils Report
  - Click on the Third button from the right OR
  - Go to the File Menu and drag down to Generate Boring Log Report
  - Name your Soils Report – (\*Hint – Name same as MnBorlog File)
  - Click on “SAVE”
5. Generate a Data (or Key) File for GEOPAK or InSitu
  - Second Button form the right or
  - Go to the File Menu and drag down to Generate InSitu Key File
  - Name your Data Report – (Hint – Name same as MnBorlog File)
  - Click on “SAVE”

6. IF you edit, resave the file!

**To View Soils Report and print out a hard copy of the notes:**

1. Open "Windows Explorer"
2. Go to your "E" Drive
3. Open the confile folder
4. Double Click on the Soils Report you wish to open
5. Then go to the File Menu and PRINT